

Manufacturing Supplying and **Exporting**

High-quality, durable products
tailored to client specifications with
cutting-edge technology.



WE DO WHAT WE SAY!

ACCENTURETM
ENGINEERING

About Us

ABOUT US

Established in 2020, **Accenture Engineering** has rapidly emerged as a trusted name in the field of manufacturing, supplying, and exporting high-quality industrial products. Based in Olpad, Surat (Gujarat, India), we are committed to delivering excellence by leveraging modern infrastructure, cutting-edge technology, and a team of skilled professionals. Our products are crafted using premium-grade raw materials sourced from reliable vendors and are designed with precision to meet the unique needs of our clients.

With a client-centric approach, we ensure every product we deliver reflects superior quality, robust construction, and long service life—earning us appreciation from customers across diverse industries. Our offerings are competitively priced and available through flexible payment options.

Our Mission

To deliver **innovative**, **durable**, and **high-performing engineering** products that meet and exceed customer expectations while ensuring consistent quality, timely delivery, and outstanding service.

Our Vision

To become a **globally recognized** engineering brand by setting new benchmarks in manufacturing excellence, **customer satisfaction**, and **technological innovation**.



How We Work

At Accenture Engineering, we believe in precision, performance, and partnership. Here's how we bring our values into every project:

1. Client Consultation

We begin by understanding the exact requirements and technical specifications of our clients.

2. Custom Product Development

Our in-house team of experts designs and manufactures products tailored to client specifications using the finest raw materials and latest machinery.

3. Quality Assurance

Each product undergoes stringent quality checks under the supervision of qualified auditors, ensuring compliance with international standards.

4. Timely Delivery

Thanks to our advanced infrastructure and wide distribution network, we consistently fulfill bulk and urgent orders within committed timelines.

5. After-Sales Support

Our job doesn't end at delivery—we offer dedicated support to ensure complete client satisfaction and long-term relationships.

Industries We Serve:

- Transmission Industry.
- Solar Structure Industry,
- Fastener Industry,
- Structure Fabrication and Machining Industry.
- Special Purpose Automation Works.
- Press Brake Industry.
- Pharmaceutical Industry.
- Die & Mold Industry.

Our Process

OUR PRODUCTS



TOOLING (DIES, PUNCHES, BLADES)

Punching and slotting in MS plates from 0.5 mm to 32 mm thickness.

Made with high-performance composite material for light and heavy-duty use

Vacuum hardened and finished with surface or cylindrical grinding as needed

SPECIAL PURPOSE MACHINERY PRODUCTS

Slewing ring bearing provided for smooth rotational movement

Adjustable stand supports objects in slideway motion.

Trolley movement automated with PLC-controlled crane wheels.



FABRICATED AND MACHINING PARTS

Plate storage racks available in 3 and 8 compartment options.

50-ton capacity trolley designed for heavy-duty material handling.

Wheel adjustment feature ensures smooth and stable movement.



PRESS BRAKE M/C DIES & PUNCHES

Press brake dies and punches available in Goose Neck and V-shape designs.

Multiple angle options to suit various bending needs.

Customization available as per customer requirements.



OUR PRODUCTS



EOT CRANE AND SHAFT PARTS

Crane wheels and EOT shafts manufactured as per customer design.

Supplied with hardening and precision grinding.

Built for durability and heavy-load performance.

Products

GEARS PRODUCTS AND PARTS

Spur, bevel, worm, shaft, and compound gears available.

Gearbox manufacturing as per customer specifications.

Precision-engineered for reliable power transmission.



ROLLER (METAL & CASTING & NON FERROS METAL)

Metallic rollers and bed rollers with pedestal bearings.

Durable cast nylon rollers for smooth operation.

V-shaped rollers for guided and stable movement.

FASTENER TOOLING (DIE & PUNCHES)

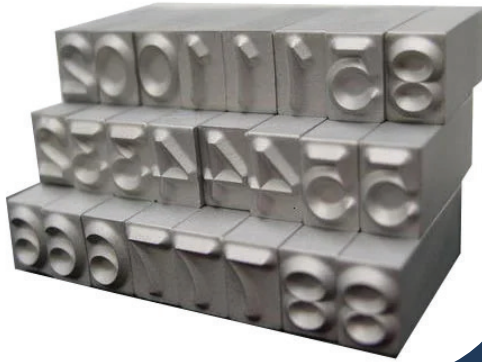
M2 (HSS) punches and Vidia carbide die tools with 58–62 HRC hardness.

High durability and precision for industrial applications.

Custom tool solutions available as per customer requirements.



OUR PRODUCTS



STAMPING CHARACTER (HAND TYPE & MACHINE TYPE)

Marking characters (alphabets & numerics) available in various sizes with hardened material.

Durable for long-term industrial marking use.

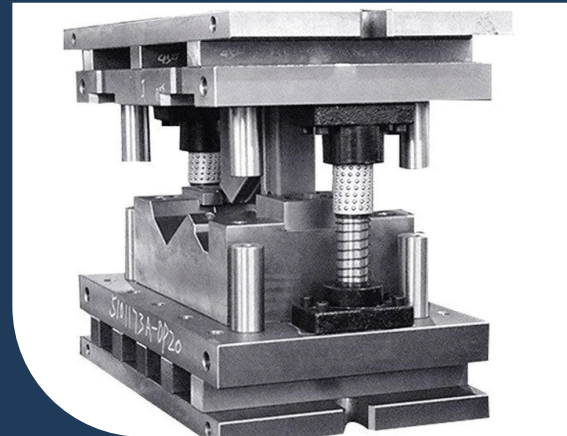
Custom machine stamps provided as per requirements.

POWER PRESS DIES WITH REFERENCE DRAWINGS

Stamping dies for transformer and submersible pump plates designed with in-house machining.

Washer cutting dies are designed and manufactured internally.

Special cutting parts can be produced on a production basis with in-house die design.

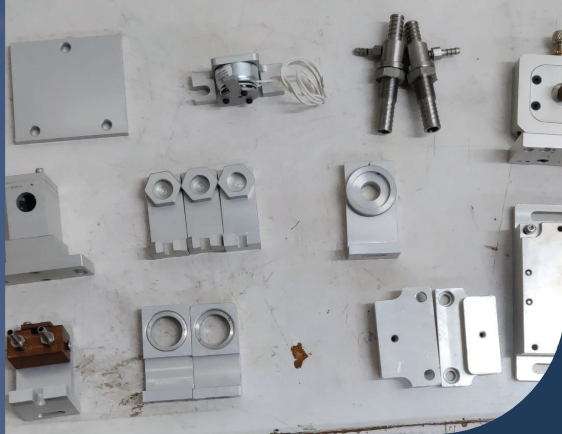


PHARMA SCHEITICAL TABLET PUNCH WITH COATING

SHEETMETAL TURRET PUNCHING AND DIES



OUR PRODUCTS



ALUMINIUM PARTS & PRODUCTS (DIAMOND CNC & LASER CUTTING MACHINE PARTS):

1. 4P MACHINE AXIS (X, Y, Z)
2. SARINE MACHINE PARTS ASSEMBLY
3. FIBER MECHANICAL SET
4. LASER GREEN RAIL SET
5. FIBRE GREEN RAIL SET
6. ROTARY ZULO (SINGL & MULTI)
7. BMO SET
8. GREEN RAIL & LASER RAIL MOUNTS
9. Z CASTING SET
10. GALAXY MACHINE ASSEMBLY
11. AUTO BLOCKING AND AUTO POLISHING PARTS

DIE AND PUNCHES FOR TRANSMISSION LINE



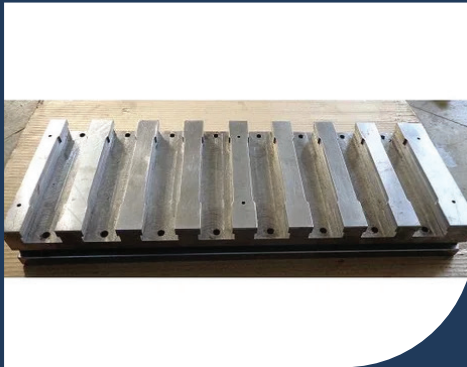
KEY OFFERINGS

- CUSTOMIZED MANUFACTURING CUSTOMER DESIGN AND SPECIFICATIONS.
- HIGH DURABILITY FOR EXTENDED LIFE AND HEAVY-DUTY USE.
- PRECISION ENGINEERING FOR HIGH ACCURACY AND SMOOTH OPERATION.
- HEAVY LOAD HANDLING WITH ROBUST PERFORMANCE.
- END-TO-END FINISHED PRODUCT SOLUTIONS.

OTHER PRODUCT



C UNIT



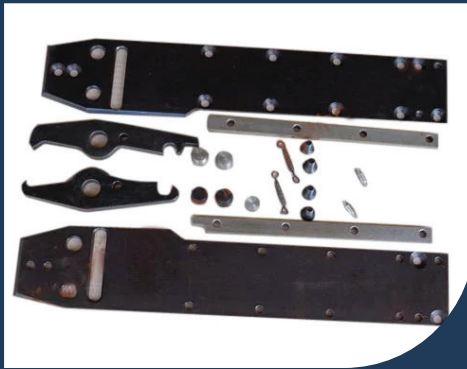
CASSETTE DRAWER



CASSETTES



HOLD DOWN LEG



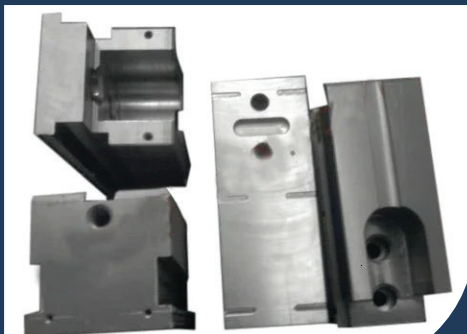
PINCHER ASSEMBLY



PINCHER JAW



RAM HOLDER



SLIDE PIECE



T TYPE ROLLER

MACHINE CAPACITY

VERTICAL MILLING CENTRE



BHARAT FIRTZ VERNER SERIES "V6"

(X-1200 MM, Y-610 MM, Z-610 MM
// WEIGHT CAPACITY -1200 KG)

BHARAT FIRTZ VERNER SERIES "V5"

(X-1200 MM, Y-610 MM, Z-610 MM
// WEIGHT CAPACITY -1200 KG)



JYOTI CNC AUTOMATION "RX-10"

(X-510 MM, Y-310 MM, Z-450 MM
// WEIGHT CAPACITY -500 KG)



JYOTI CNC AUTOMATION "RX-20"

(X-820 MM, Y-510 MM, Z-510 MM
// WEIGHT CAPACITY -600 KG)



MACHINE CAPACITY

VERTICAL MILLING CENTRE



BAND SAW CUTTING MACHINE

02 NOS (CUTTING DIA 200 MM,
FLAT 200 X 200 MM)

AUTOMATIC TAPPING MACHINE

01 NOS (M3-M36 TAPPING
DONE)



DRILLING MACHINE

02 NOS



LASER MARKING MACHINE

01 NOS



HARDNESS TESTER MACHINE

01 NOS

MACHINE CAPACITY

CNC TURNING CENTRE



**ACE MICROMATIC SUPPER JOBBER
500 LM (02 NOS)**

DIA 300 MM, BETWEEN CENTRE 1000 MM.

**ACE MICROMATIC SUPPER JOBBER
300 LM (01 NOS)**

DIA 200 MM, BETWEEN CENTRE 400 MM.

ACE MICROMATIC (02 NOS)

DIA 600 MM, BETWEEN CENTRE 1000 MM.

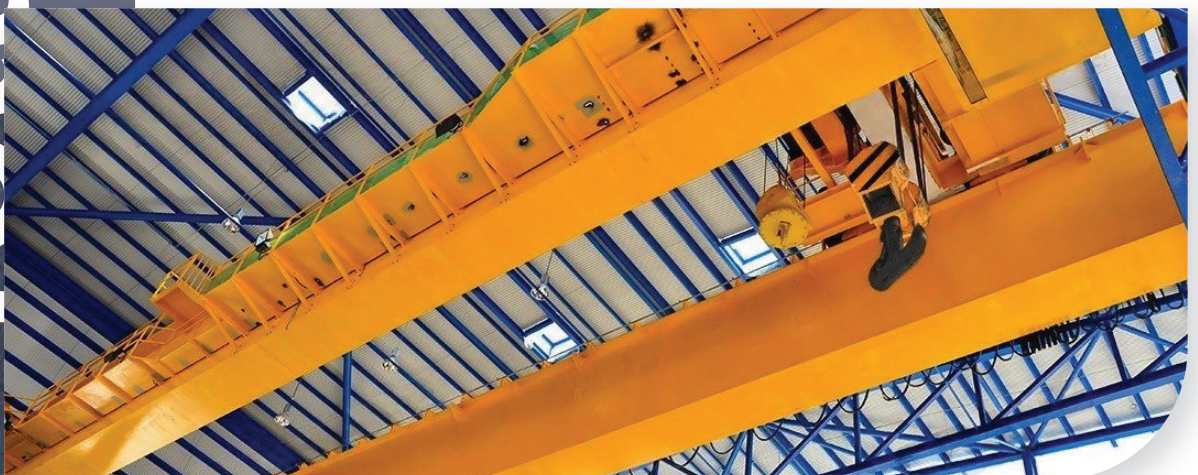
PLANT CAPACITY

14000 SQ FT (SHED AREA: 8000 SQ FT)

Total Area



10 MT CRANE AVAILABLE





ACCENTURE

ENGINEERING

At **ACCENTUR ENGINEERING**, we engineer with precision,
combine innovation with durability,
and deliver solutions that stand the test of time.

Contact Us



Mr. Savan koradiya

+91 82388 12942



Mr. Maulik Chodvadiya

+91 75758 63001



contact.accentureengineering@gmail.com



www.accentureengineering.com



**Plot No. 10 to 17, Maa Shingali Industrial
Estate, Nr Olpad - Sayan Road, Atodara
Chowakdi, Olpad, Gujarat - 394540**